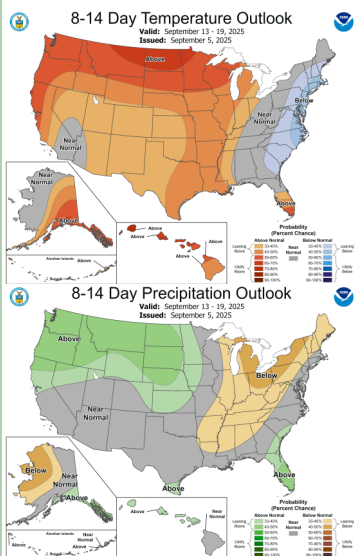


SEPTEMBER 5, 2025

General Status

Now that we are moving into September we finally found a week with no pest requiring treatment in our Plains Pest Management scouting program fields. It may have been all the way back in June since we have been able to say that. Most of our economic pest issues have come from plant bugs in cotton but no crop has been left unscathed by multiple species pressing. And, it is not like the pests have eased up in most cases, but rather we are finally starting to have fields develop past their vulnerability to these pests. Corn silage trucks have been running for a while and are still making progress, sorghum fields are developing grain with



some reaching philological maturity this week, and we finally have cotton fields with nothing but large bolls on the top-crop that our



Open cotton bolls and mature grain were much more common in the area this week.

typical pests cannot establish on or damage. Not every field is at this sought after stage and for at least half of our PPM acres, we have at least another week and in some cases much more scouting to keep them safe. September will remain an important month for many fields this year. Even for the fields maturing passed things like bollworms or Lygus, we now have 'untraditional' established populations of pests like stink bugs which can damage crops almost until harvest. From what we are seeing we will need to watch those pest carefully as we move into harvest aid season soon.

Cotton

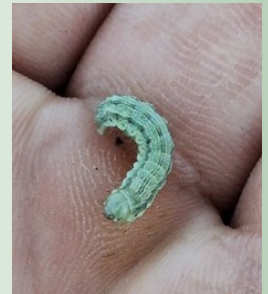


NE Hale field on the Floyd county line that is passed most insect damage this week, treated for bollworms & Lygus 2 weeks ago.

Our PPM cotton fields ranged in stage from recently cut-out though 1% open boll with about half of our fields having been in absolute cut-out for several weeks and having developed passed economic insect damage with large bolls only on the top-crop. This did not stop some pests from trying to establish themselves in these more mature fields. We found tapering off bollworm egg lay, some lingering Lygus, a few scattered cotton aphids, and a concerning stink bug presence in many of these older fields. These same pest threats were in our later or lusher fields this week also but at a higher rate. None of our fields reached threshold levels due to two factors. First, we still have an astounding beneficial population in these fields trimming all pest populations, but they are particularly doing best in holding the bollworm mortality high. Secondly, many of the bolls being damaged by the primary pests on our list this week were too late and young to make. We did have a few concerning non-Bt fields with bollworm larva populations near 6,000 worms (of mixed sizes) per acre with about 1% harvestable fruit damage level (4.8% total fruit damage). These fields were in our typical bollworm problem area in the convergent area where Hale, Floyd, Swisher, and Briscoe Counties come together and had a healthy Lygus population aiding in the chaos. This is the very definition of nickel and dime damage. When harvested, some insect damage will be noted, but it is doubtful that the damage would have been sufficient to cover the cost of application at the current market level. In higher market value seasons, this level of damage might be justifiable for treatment. These lusher fields will have at least another week for intense scouting before they can be deemed safe from these pests.

As we transition into harvest aid season over the coming weeks, we do not need to forget the stink bug and aphid threats. This week our cotton aphid populations were just barely noticeable, but most fields had some stink bugs in them. We noted no clustering or stink bug damaged harvestable bolls with all damage being to smaller bolls.

Our PPM cotton fields ranged in stage from recently cut-out though 1% open boll with about half of our fields having been in absolute cut-out for several weeks and having developed passed economic insect damage with large bolls only on the top-crop. This did not stop some pests from trying to establish themselves in these more mature fields. We found tapering off bollworm egg lay, some lingering Lygus, a few scattered cotton aphids, and a concerning stink bug presence in many of these older fields. These same pest threats were in our later or lusher fields this week also but at a higher rate. None of our fields reached threshold levels due to two factors. First, we still have an astounding beneficial population in these fields trimming all pest populations, but they are particularly doing best in holding the bollworm mortality high. Secondly, many of the bolls being damaged by the primary pests on our list this week were too late and young to make. We did have a few concerning non-Bt fields with bollworm larva populations near 6,000 worms (of mixed sizes) per acre with about 1% harvestable fruit damage level (4.8% total fruit damage). These fields were in our typical bollworm problem area in the convergent area where Hale, Floyd, Swisher, and Briscoe Counties come together and had a healthy Lygus population aiding in the chaos. This is the very definition of nickel and dime damage. When harvested, some insect damage will be noted, but it is doubtful that the damage would have been sufficient to cover the cost of application at the current market level. In higher market value seasons, this level of damage might be justifiable for treatment. These lusher fields will have at least another week for intense scouting before they can be deemed safe from these pests.



Small bollworm from SE Swisher this week.

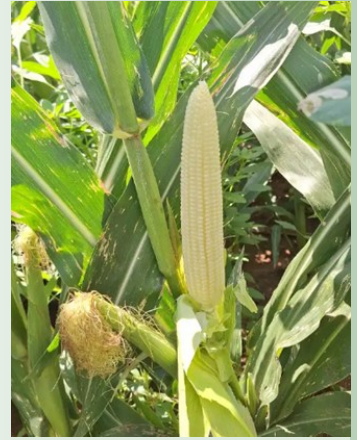


Figure 30. Brown stink bug (top left), conchuela stink bug (top right), rice stink bug (bottom left), and southern green stink bug (bottom right).

Stink bugs from our sorghum guide. This pest will often cluster in sorghum and then move in mass groups to individual cotton fields until harvest.

Corn

Most of our older corn has already been silage with just a few fields waiting on harvesters as of the middle of the week. None of these fields were scouted. Our late season corn, currently in pollination to early blister stage, was our main scouting focus. In these late fields there were no major pest changes. Spider mites are hard to find but corn earworm are just starting to sink into these fields, hopefully fruitlessly. We had major concerns over pollination and disease issues, both from the corn leafhopper threat and corn stunt and from LSD (late season decline). Early indications show pollination is going well and we are not seeing any corn stunt symptoms yet.



Corn ear from C Hale this week.

Sorghum

Our sorghum fields range from dough to physiological maturity with just a few fields developing passed insect concerns and are drying for harvest. Headworms were a concern that never really materialized this week. We did find a few diminishing numbers of worms with an increasing percentage of fall armyworms in the mix, but we do seem to be on the tail end of the moth flight. Lygus generally increased in our sorghum heads, some up to near 10 per head, which is still below threshold levels. As fields moved into hard dough, these Lygus numbers increased through reproduction with most being small nymphs. But, as fields matured even farther, these threatening Lygus moved on from the most mature fields. Stink bugs were harder to find in sorghum this week, which might be a good sign. The sorghum aphid looks to have completely crashed in our fields after most fields required treatment with just a few with beneficials that held on well enough. We are noting more fields with mild LSD symptoms in this post reproductive stage fields.



Silage sorghum in SW Hale in dough stage this week.

Pest	Threshold
False chinch bugs	140 per head until the hard-dough stage. Do not treat beyond the soft-dough stage.
Lygus bugs	12 per head until the hard-dough stage. Do not treat beyond the soft-dough stage.

Join Us

MID HIGH PLAINS COTTON FIELD DAY

SEPTEMBER 29, 2025 9AM

CEUs
Available

9:00AM- MEET AT TULE CREEK GIN,
BREAKFAST, CEU SIGN UP, & INTRODUCTIONS

9:30AM- TRAVEL TO FIELD- MIKE GOSS FARM

10:00AM- 2025 SWISHER PHYTOGEN COTTON
VARIETY TRIAL

10:30AM- WIREWORM EFFICACY TRIALS &
LATEST MANAGEMENT TIPS

11:00AM- IPM UPDATES & PEST WATCH LIST

11:30AM- SCOUTING FOR HARVEST AID
READINESS

SPONSORED BY:



SPEAKERS

TEXAS A&M AGRILIFE
EXTENSION:

BLAYNE REED - PROGRAM
SPECIALIST IPM, MID HIGH
PLAINS & UPPER ROLLING
PLAINS

DR. SUHAS VYAVHARE,
SPECIALIST, ENTOMOLOGY
DISTRICT 2

PHYTOGEN COTTON SEED:
CAMERON OLIVER, FIELD
AGRONOMIST, TX, OK, KS

Texas A&M AgriLife Extension Service /
 Texas Pest Management Association

225 Broadway, Suite 6
 Plainview, TX 79072
 Tel: 806.291.5267
 Fax: 806.291.5266
 E-mail: Blayne.Reed@ag.tamu.edu

We're ONLINE



Newsletters and IPM Reports

as well as out latest

*High Plains Weekly IPM
 "Radio" Podcast*

*at Plains Pest
 Bugosphere*

<https://halecountyipm.blogspot.com>

*For text pest alerts to your
 phone, register at:*

PEST PATROL
BLAYNE REED
 IPM Extension Agent
 Texas A&M University

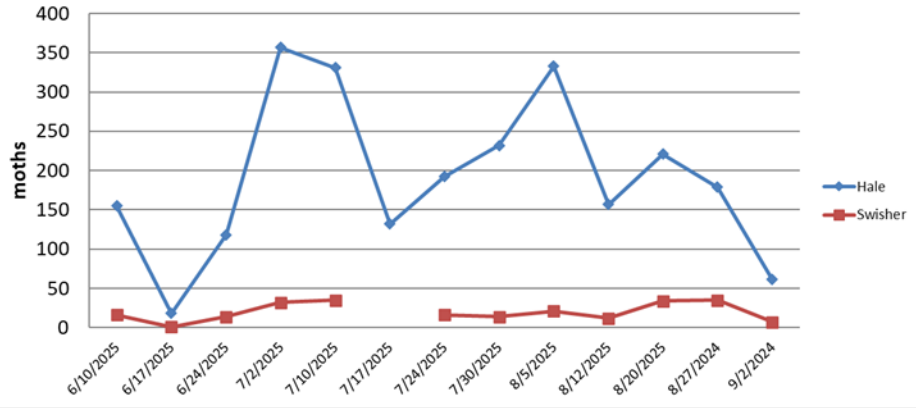
Sign up for alerts

syngenta

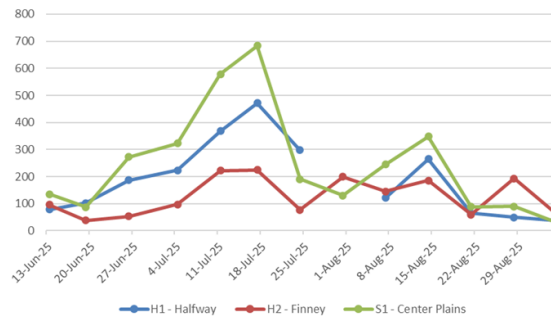


The members of Texas A&M AgriLife will provide equal opportunities in programs and activities, education, and employment to all persons regardless of race, color, sex, religion, national origin, age, disability, genetic information, veteran status, sexual orientation or gender identity and will strive to achieve full and equal employment opportunity throughout Texas A&M AgriLife. The information given herein is for educational purposes only. References to commercial products or trade names is made with the understanding that no discrimination is intended and no endorsement by the Texas A&M AgriLife Extension Service is implied nor does it imply its approval to the exclusion of other products that also may be suitable.

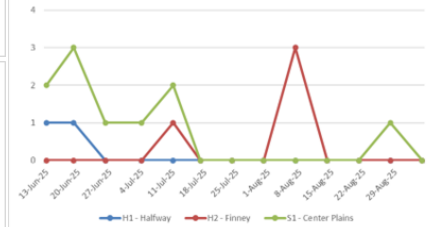
2025 Adult Bollworm Moth Trap Catches Set Locations



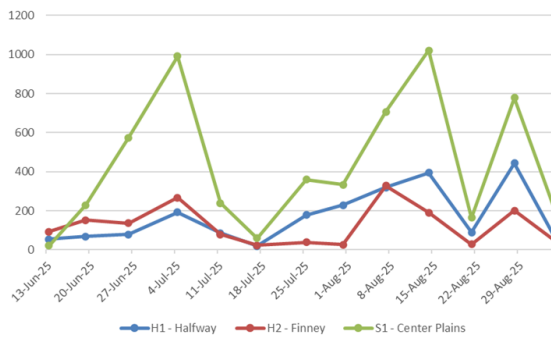
Corn Earworm 2025 Hale & Swisher Moth Traps



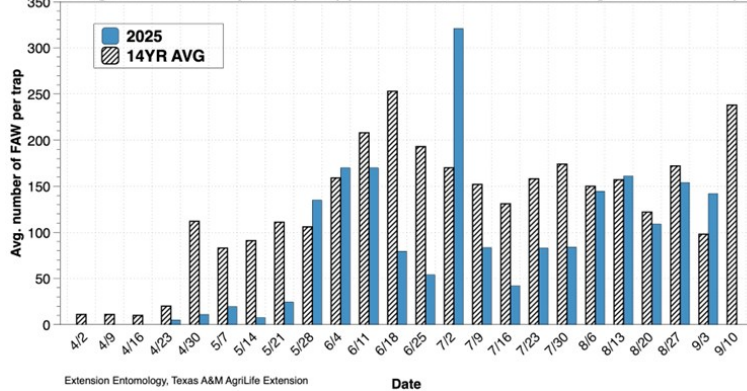
Southwestern Corn Borer 2025 Hale & Swisher Moth Traps



Fall Armyworms 2025 Hale & Swisher Moth Traps



Average number of fall armyworms per trap per week, 2025, Lubbock Texas. Averages based on two traps.



Blayne Reed