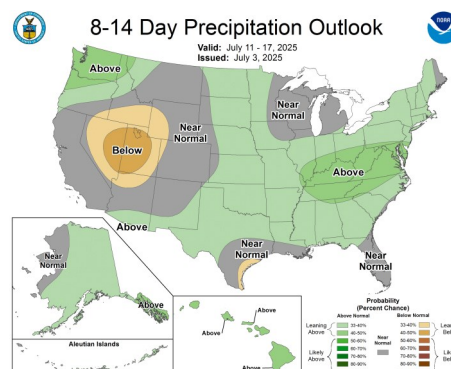
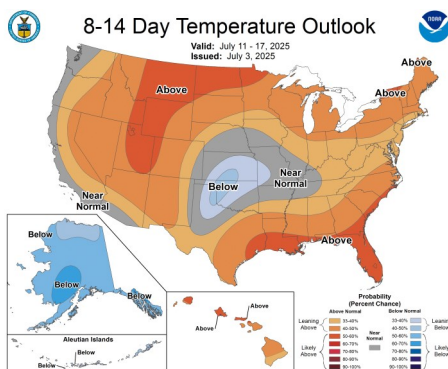
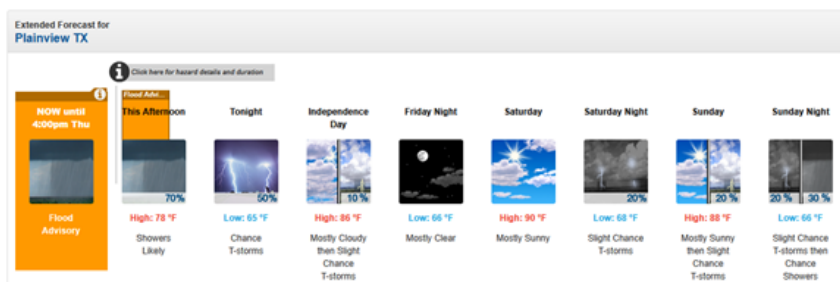


JULY 3, 2025

## General Status

There is a lot of insect activity in our production fields this week. There are plenty of full seasons where we do not see this much pest activity. This weather shortened scouting week has seen multiple High Plains counties, including Hale, turn up positive for the corn leafhopper. Dancing around and through dizzily rain bands for the better part of the week, we have been finding a remarkable amount of fleahoppers in our cotton that are requiring treatment. In addition, much of our pest trap numbers, at least what we have been able to collect this week, for multiple species are up. This give us plenty of incentive to monitor multiple pests in our multiple summer crops this month. As for our rainfall amounts, before an ongoing rainstorm today, July 3, 2025, did not amount to much positive soil moisture. Clouds and misty rains have certainly kept temperatures comfortable for grain crop development but could limit heat units for cotton. This impact should be minimal as all fields we are looking at are still pre-bloom and developing well. No field is going to be reaching 1<sup>st</sup> bloom by the optimum target of July 4<sup>th</sup>, but all most are well within an average developmental timeline, if early fruit loss from pests can be limited.



## Cotton

Today's rain showers have shortened our scouting and there are about a dozen fields we have not been able to reach yet. We are very concerned about the pest status of these fields. So far, our Plains Pest Management cotton has ranged in stage from pin-head square to ½ grown square. Our pest of note this week has certainly been fleahoppers.



A Central Hale 1/3 grown square this week proving good development.



2 Fleahopper adults were found on this Central Hale plant (above), while lower on the plant were blasted squares, proof of their feeding.

pers. Of the fields scouted this week, about 60% have been over threshold and were recommended for

treatment. All fields had some level of fleahopper pressure. This fleahopper population ranged in pressure from just under 1% infested terminals up through 65% infested terminals. While the new fleahopper threshold was utilized for our treatment recommendations this really did not influence our recommendation decisions.

All of these fields where we recommended treatment would have been over our old threshold too with most hovering around a 40% infested level with associated fruit drop. The continued use of fruit loss to this threshold seems justified for the High Plains

at an un-research confirmed face value. A



In this S Swisher field, 5 Fleahoppers and a freshly dropped square came off on this drop cloth. There are 3 green fleahopper adults, 1 green fleahopper nymph, and 1 black fleahopper adult.

few fields that were over the 6% level, which consisted of only adults, did not

have an increase in fruit loss from last week. This could indicate an early infestation, an active beneficial population,

### Calculated Cotton Fleahopper Threshold Using Across Sampling Methods (% infestation)

Control Cost (\$/ac)	Market value (\$/lb)	Economic threshold (80% EIL)	Control Cost (\$/ac)	Market value (\$/lb)	Economic threshold (80% EIL)	Control Cost (\$/ac)	Market value (\$/lb)	Economic threshold (80% EIL)
\$10.00	0.50	5.90	\$12.50	0.50	7.37	\$15.00	0.50	8.85
	0.60	4.92		0.60	6.14		0.60	7.37
	0.70	4.21		0.70	5.27		0.70	6.32
	0.80	3.69		0.80	4.61		0.80	5.53
	0.90	3.28		0.90	4.10		0.90	4.92
	1.00	2.95		1.00	3.69		1.00	4.42

A general threshold of 4 to 7 cotton fleahopper per 100 plant terminal could be adopted.

or that the plant bugs are only passing through. Either way, treatment did not seem justified in those fields yet.

Only careful scouting can answer this question.

Our fruit drop this week ranged from a rare and young 0% to 35.6% with most un-infested fields still hovering below 10%. Our highest percentages of fruit drop were infested with solid populations of fleahoppers mixed with a few adult Lygus aiding in



Lygus and Fleahoppers from the same data set in Central Hale this week.

the damage. Very few fields held Lygus and if alone, no fields would have been threshold for the Lygus. Fleahoppers will be an issue for our High Plains cotton until we see blooms in field with regularity, but Lygus will be an issue until the last harvestable boll receives 350 heat units.



Cotton plant showing a blasted square from S Swisher this week. In this image are several more additional fruiting sites with missing squares.

Dr. Suhas Vyavhare recorded some thoughts and trial results on treatment options for Fleahoppers. This results in an outstanding list of products labeled as chemical treatment options for plant bugs and the advantages of choosing each on the Texas High Plains: <https://focusonagriculture.blogspot.com/2025/07/south-plains-cotton-pest-update-product.html>. From what I am seeing, I recommend products that will have the most residual and are the softest on the beneficials. We are weeks away from having the Fleahoppers behind us and we will be needing those beneficials rebounding quickly to stave off future pests that seem to be on the way.

### Corn Leafhopper Updates

There is not much more to say this week about the corn leafhopper that has not been said already. Multiple counties on the High Plains have been proven positive for the pest this week, including Hale. If your corn in your county has not proven positive yet, it probably should be considered as positive and this pest is very hard to scout for



Corn Leafhopper found in Lubbock last week by Dr. Porter.

then the threshold is 1 in the field. Here is the link to Dr. Kerns' update from yesterday, which pretty much covers it all now that the High Plains has this pest: <https://on.soundcloud.com/wjFVEuNAvScI95SW5t>

We are recommending action according to each PPM corn field's stage and grower's concern of this pest.

## Corn and Sorghum

This week our corn stages ranged from germinating through early tassel. Corn leafhopper aside, the corn pests are relatively quiet. We did find an increase in Banks grass mite, meaning we were able to find a few colonies periodically. We could also find some fall armyworm damage in non-Bt fields and refuge. Corn earworms (bollworms) are very active in fields this week where they should not be of economic concern for all corn, fresh corn for food aside.

We did find an additional field with late season decline (LSD), a bacterial disease that has nothing to do with the corn leafhopper that we know of. I should stress these are early symptoms and not every plant has the symptoms. If the disease takes hold early enough in the growth stages and spreads across the field, early desiccation of infected plants late in the season will be devastating. Here is the link to the LSD factsheet again: [https://](https://agrillifelearn.tamu.edu/s/product/lateseason-decline-disease-of-corn/01t4x000008XgnAAAS)



Typical early LSD symptoms.

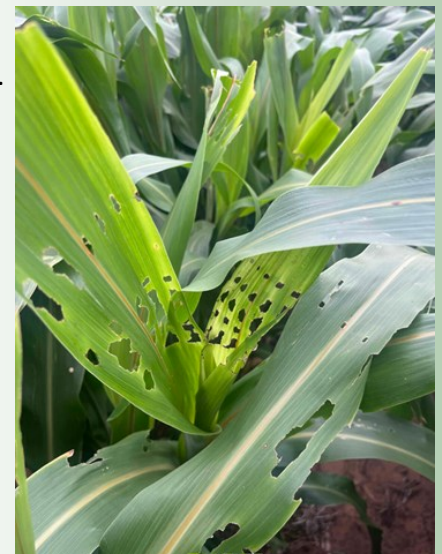
[agrillifelearn.tamu.edu/s/product/lateseason-decline-disease-of-corn/01t4x000008XgnAAAS](https://agrillifelearn.tamu.edu/s/product/lateseason-decline-disease-of-corn/01t4x000008XgnAAAS). Here is a link to an outstanding article from AgriLife Today where LSD is the subject and its impact on an Armstrong corn field one year and additional fields the next along with Dr. Obasa's interactions and recommendations for growers with this issue: [https://](https://agrillifetoday.tamu.edu/2025/06/25/a-season-in-decline-diagnosing-a-failing-crop/)

[agrillifetoday.tamu.edu/2025/06/25/a-season-in-decline-diagnosing-a-failing-crop/](https://agrillifetoday.tamu.edu/2025/06/25/a-season-in-decline-diagnosing-a-failing-crop/).



Corn leaf aphids in SW Hale this week.

Our sorghum fields ranged in stage from V7 through VX that should be nearing flag leaf. The fall armyworm damage is much more widespread this week and was joined by a few other headworm species (bollworm), but still below threshold. We are finding corn leaf aphids more commonly also. Do not mistake this almost harmless aphid feeding in the whorl to some of the more harmful species which typically



While unsightly, this FAW damage is below 1% total foliage damage and not a serious threat in this SW Hale field this week.

usually feed on the lower leaves. We also noted a slight increase in yellow sugarcane aphid

damage, which also remains well below threshold.



Texas A&M AgriLife Extension Service /  
Texas Pest Management Association

225 Broadway, Suite 6  
Plainview, TX 79072  
Tel: 806.291.5267  
Fax: 806.291.5266  
E-mail: Blayne.Reed@ag.tamu.edu

## We're ONLINE



*Newsletters and IPM Reports*

*as well as out latest*

*High Plains Weekly IPM  
"Radio" Podcast*

*at Plains Pest  
Bugosphere*

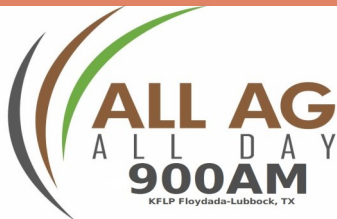
<https://halecountyipm.blogspot.com>

*For text pest alerts to your  
phone, register at:*

**PEST PATROL**  
BLAYNE REED  
IPM Extension Agent  
Texas A&M University

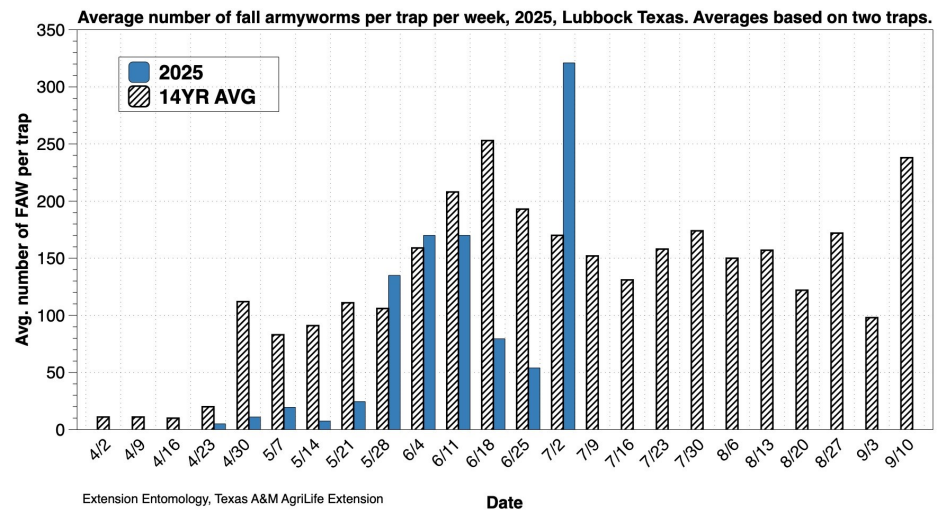
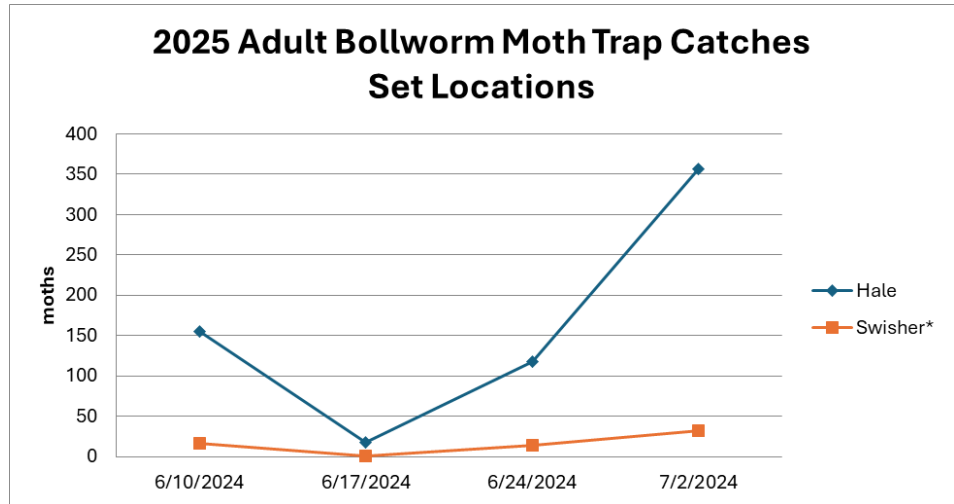
Sign up for alerts

syngenta.



The members of Texas A&M AgriLife will provide equal opportunities in programs and activities, education, and employment to all persons regardless of race, color, sex, religion, national origin, age, disability, genetic information, veteran status, sexual orientation or gender identity and will strive to achieve full and equal employment opportunity throughout Texas A&M AgriLife. The information given herein is for educational purposes only. References to commercial products or trade names is made with the understanding that no discrimination is intended and no endorsement by the Texas A&M AgriLife Extension Service is implied nor does it imply its approval to the exclusion of other products that also may be suitable.

Due to the rainy weather, we have been unable to collect data from our Texas Corn Producers corn Pest Traps this week. All other traps and impressions from the field indicate an increase in moth activity that pest activity could follow soon. We should be scouting for the southwestern corn borer (2nd generation) this week carefully.



*Blayne Reed*