

Plains Pest Management News

June 14, 2012

Volume 2, Issue 1



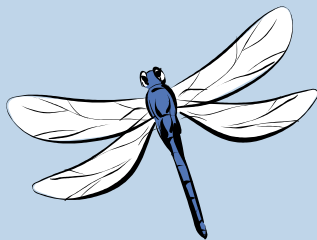
Inside this issue:

Cotton

Corn

Sorghum

New Agent



Cotton

Rainfall has been variable over the past three weeks ranging from a trace to 5.5 inches. Many areas have had 1.5 to 3 inches which has been a relief for early irrigation. At my house in Plainview, I have had a total of 1.3 inches for the last four rain events. Along with the rains has come hail, which was not welcome. Also, some cotton in sandy locations was "blown out" by sand. Some of the heaviest damage has occurred around the Cotton Center area.

Cotton observed this week ranges from cotyledon stage to early squaring. Many fields are in the 4 to 6 leaf stage. Thrips have been the early season pest of concern over the past four weeks, but seed treatments and at planting insecticides held down populations until the hard driving rains hit the area. After the heavy rains many thrips infestations declined. Our counts have generally averaged less than one thrips per plant. Many growers have added a second insecticide treatment as they go over the

We have a new County Extension Agent for Ag/Natural Resources in Hale County. His name is Gary Cross and I would encourage you to come by and meet him or call him at 291-5267.

top with a Roundup application for weed control. As cotton reaches the 6 leaf stage, growers need to shift their attention from thrips scouting to cotton fleahopper and Lygus bug infestations.

A replant decision guide has been published by Dr. Calvin Trostle, Extension Agronomist and can be found on the Lubbock Agrilife Extension website at: <http://lubbock.tamu.edu>.

Corn & Sorghum

Corn is knee high to thigh high in many fields and is in excellent condition with the recent rains. An occasional Banks grass mite colony can be found on the lower leaves and these have been located in field margins next to wheat.

Whorl feeding has been light with an occasional corn earworm or fall armyworm found.

Some whorl feeding has been observed in sorghum, but most fields are in the early whorl stage and only about six to eight inches in height. Fall armyworm collections in area traps have been up, so growers should scout fields for early infestations of this pest. Extremely heavy infestations can damage the growing point.

Texas AgriLife Extension Service

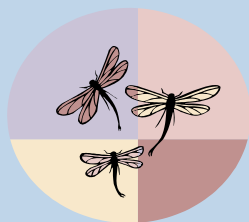
Hale County Office
225 Broadway, Suite 6
Plainview, Texas 79072

Tel. 806.291.5274

Fax 806.291.5266

E-Mail: gcronholm@ag.tamu.edu

Greg Cronholm, Retired
Extension Agent—IPM
Emeritus



We're on the
Web
[http://
hale.agrilife.org](http://hale.agrilife.org)



INTEGRATED PEST MANAGEMENT IN HALE & SWISHER COUNTIES